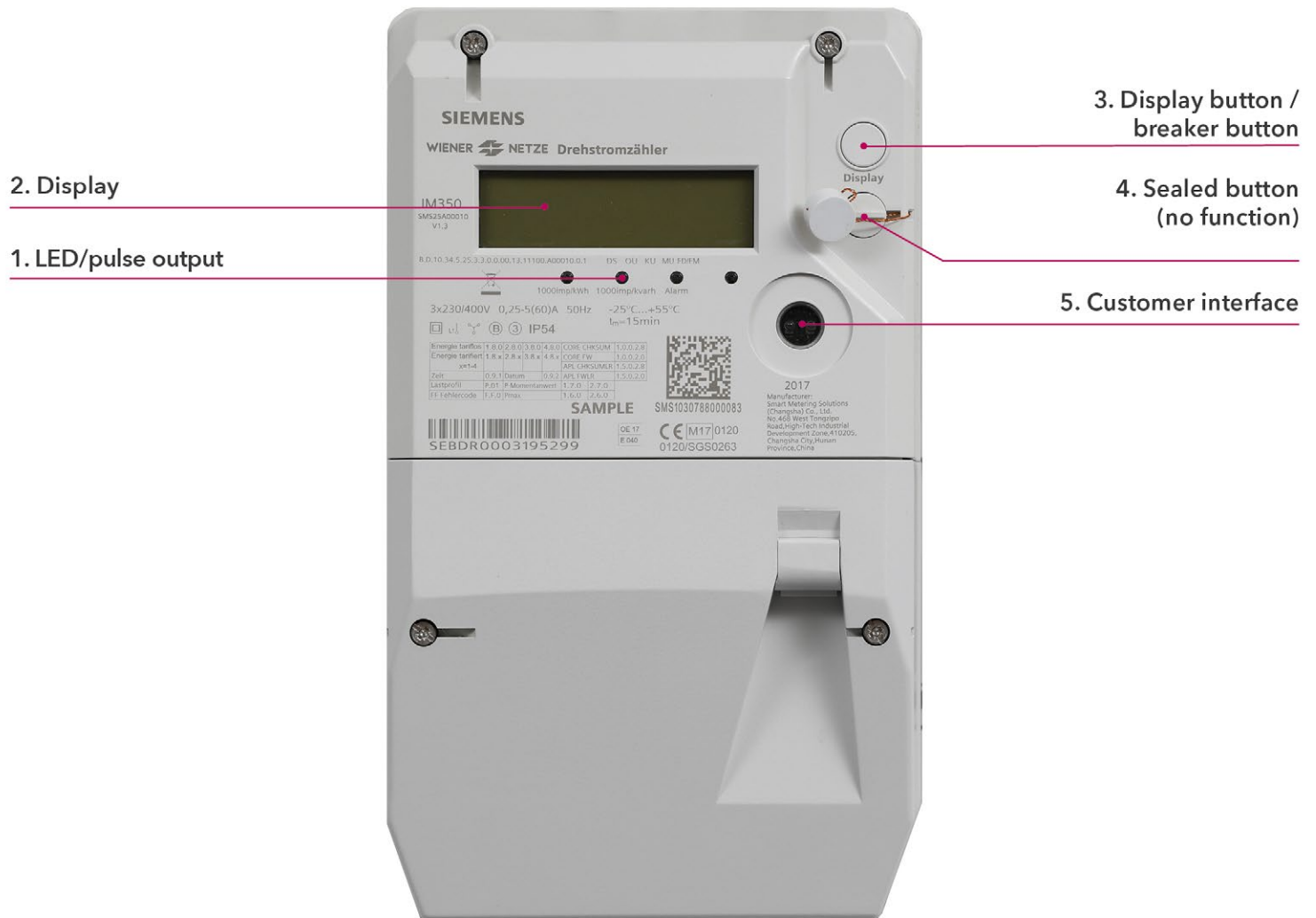


Smart meter user manual

SIEMENS Three-Phase meter (IM350) and Single-Phase meter (IM150)

The future is here: Your new electronic electricity meter from Wiener Netze has arrived. The smart meter helps save electricity and opens the door to a range of helpful applications. Below is an overview of the most important functions of your electricity meter.

Your smart meter:



Elements and functions of your smart meter:

1. LED/pulse output

The light emitting diodes (LED) indicate the current status of the electricity meter.

From the left:

- 1. and 2. LED: flashing = power consumption; illuminated = no power consumption
- 3. LED: flashing = error
- 4. LED: offline

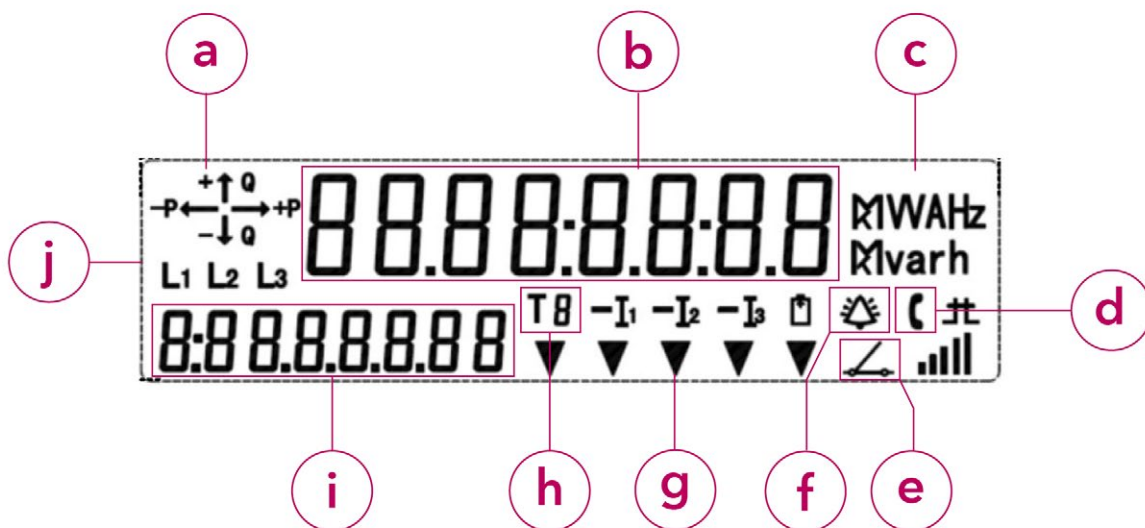
Is your electricity meter ready for use but not yet switched on? This is how you switch on the electronic meter:



1. Check that the meter is connected to the mains: The LEDs (1) are flashing or illuminated and the display screen is active.
2. The system status in the display (2) must be "ready to connect".
3. Press and hold the display button (3) for at least 10 seconds.
Release the button when "rELAY" appears on the display. Your meter is now active.

2. Display

The demonstration display below shows all symbols:



a) Energy direction

b) Display screen

c) Units of measurement

d) Communication display

e) Meter status

f) Error message: This symbol is used for analysis by the network operator.

g) Multifunction triangles

h) Tariff

i) OBIS code

j) Phases

a) Energy direction

The energy type and the energy flow are displayed here:

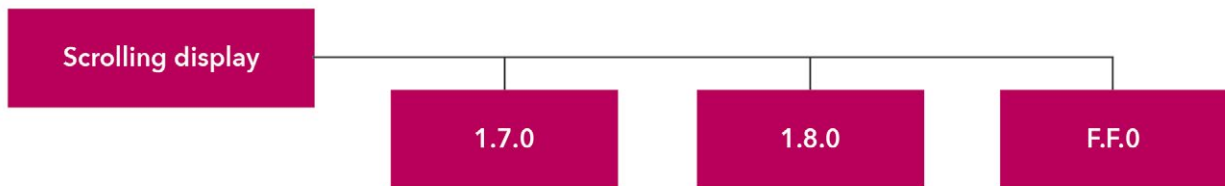
- +Q: Positive reactive energy (cannot be used)
- Q: Negative reactive energy (cannot be used)
- +P: Positive active energy
- P: Negative active energy

b) Display screen

Standard view (scrolling display)

The standard view (scrolling display) switches between the following values every five seconds:

- OBIS code 1.7.0: Instantaneous power in kilowatts (kW)
- OBIS code 1.8.0: Positive active energy (A+) in kilowatt hours (kWh) (The value for 1.8.0 refers to the meter reading as it was read on your old Ferraris meter.)
- OBIS code F.F.0: Error meter status
- OBIS code 2.8.0: Negative active energy total (HT+NT) only for production systems (e.g. photovoltaic installations).



- OBIS code 1.7.0: Instantaneous power in kilowatts (kW)
- OBIS code 1.8.0: Positive active energy (A+) in kilowatt hours (kWh)
- OBIS code F.F.0: Error meter status

Billing view

If you would like to see other billing-relevant values on your electricity meter, you have to activate this function on Wiener Netze's Smart Meter web portal or Smart Meter business portal. Select the desired meter under the "System data" section then click on the "Billing" option under the "Display" item.

Only then will your electricity meter display the required OBIS codes in the register.

The electricity meter displays the following values (depending on the tariff):

- OBIS code 1.6.0: Positive active maximum demand (A+) total in kilowatts (kW)
- OBIS code 1.8.1: Positive active energy (A+) in tariff T1 in kilowatt hours (kWh)
- OBIS code 1.8.2: Positive active energy (A+) in tariff T2 in kilowatt hours (kWh)
- OBIS code 2.6.0: Negative active maximum demand (A-) total in kilowatts (kW)
- OBIS code 2.8.1: Negative active energy (A+) in tariff T1 in kilowatt hours (kWh)
- OBIS code 2.8.2: Negative active energy (A+) in tariff T2 in kilowatt hours (kWh)
- OBIS code 3.8.0: Positive reactive energy (Q+) total in kilovolt-ampere reactive hours (kVARh)

Opt-out view

The opt-out view (scrolling display) switches between the following values every five seconds:

- OBIS code 1.7.0: Instantaneous power in kilowatts (kW)
- OBIS code 1.8.0: Positive active energy (A+) in kilowatt hours (kWh)
- OBIS code F.F.0: Error meter status

If you have selected the opt-out option, this is shown on the display ("oPt-out").

The multifunction triangles DS and OU are also illuminated.

Display when pressing the button

Pressing the display button once illuminates the display, with all elements being shown.

Pressing the button briefly (< 1 second) takes you to the next displayed values.

Pressing the button twice takes you back to the first value.

Do you want to return to the standard view or opt-out view?

The display will change back automatically after ten minutes.

c) Units of measurement




This field displays the physical unit, e.g. kilowatt hours (kWh).

d) Communication display

While the electricity meter is communicating with the network operator, a telephone receiver icon appears here.

e) Meter status

This field shows you the status of your meter.

Status	Display	Symbol
Online	switch closed	
Offline	switch open	
Ready to connect	Switch open and flashing	

f) Error message

This symbol is used for analysis by the network operator.

g) Multifunction triangles

The illuminated multifunction triangles show the current electricity meter mode.

From the left:

- DS: The display is locked.
- OU: The meter is in opt-out mode.
- KU: The customer interface (5) is activated.
- MU: The multi-utility interface (for gas or electricity meters) is activated.
- FD/FM: This symbol is used for analysis by the network operator.

h) Tariff

This symbol indicates which tariff is currently active. This is relevant for customers with e.g. a heat pump, for which there are high and low tariffs.

T1: low tariff

T2: high tariff

T3, T4: currently not in use

i) OBIS code

The OBIS code is an internationally standardised identifier on the energy market.

An example: Code 1.8.0 stands for "Positive active energy (A+) total in kilowatt hours (kWh)".

j) Phases

Here you can see which phases (current-carrying lines) of the electricity grid are live.

3. Display button/breaker button

The display button can be used to scroll between different display views. It is also the breaker button.

This allows you to switch on your electricity meter when it is ready to connect.

4. Sealed button

This button does not have any functions.

5. Customer interface

You can connect a device or system (e.g. your smart home system) to the electricity meter via the customer interface and a suitable read-out adapter.